



## AT THE HEART OF INDUSTRIAL CULTURE

### MUSEUM OF ENAMELS AND EARTHENWARE

The Museum of Enamels and Earthenware of Longwy presents the most prestigious creations from the city's manufacturers. The pottery factories can be visited, allowing you to discover the manufacturing process.



### THE DE WENDEL HERITAGE

The blacksmiths who arrived in Hayange in 1704 left a heritage that traces the history of iron in the valley: castles, mansions, workers' housing, religious sites, etc.



### THE HUSSIGNY MINE

You will discover the mining installations with the equipment of the time.



### THE BELVAL BLAST FURNACES

The towers of the blast furnaces symbolise the cultural richness of the Red Rock Region. As witnesses of an era that transformed the country and largely influenced its economic emergence and the lives of its inhabitants, the blast furnaces of Belval have left their mark on Luxembourg's history and landscape.



### MINETT PARK FOND-DE-GRAS

Historic buildings, a steam train «Train 1900», an old fashioned grocery store, a power plant and a rolling mill train ... no, you're not dreaming, all this is very real and can be discovered at the Minett Park Fond-de-Gras.



### LUXEMBOURG'S IRON MINES

At the National Mining Museum, you'll learn all about the operation of the mine and discover more than a century of technological development through its large collection, most of which is displayed in underground galleries.



### THE IRON MINE IN NEUFCHÉF

Experience a hotspot full of memory, where former miners will introduce you to the history and the universe of ore mining, in real iron mining galleries that were operated 200 years ago.



### STAINED-GLASS BY MAJORELLE

The former «Grand Bureaux» of the Longwy Steelworks house an invaluable treasure: the stained glass windows, in Art-Deco style, illustrate the theme of the steel industry: «the life of iron workers».



### THE COCKERILL MINE

The old Katzenberg mine is coming back to life, thanks to a group of passionate former miners who want to pass their memories on to future generations.



### THE IRON MINE IN AUMETZ

The iron mine in Aumetz gives insight into the history of the shaft mines, as well as into the daily life and different tasks of the miners, in an original setting.

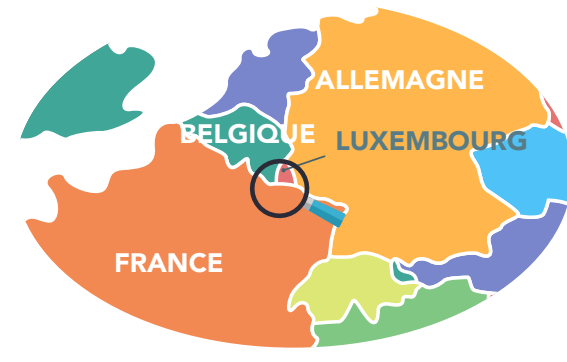


### THE BLAST FURNACE U4

A strong symbol of the industrial heritage of the Fensch Valley, preserved thanks to its inclusion in the Supplementary Inventory of Historical Monuments, it is the last of the 6 blast furnaces of the iron plant built in 1890. During the day, it welcomes visitors, who are guided by former workers; at night, it is transformed into a work of art: «Tous les soleils», created by Claude Levêque.



## LOCAL EXPERTS



**OFFICE DE TOURISME DU PAYS DE LONGWY**  
Place Darche - Puits du siège  
F-54400 LONGWY - FRANCE  
+33 (0)3 82 24 94 54  
www.longwy-tourisme.com

**OFFICE RÉGIONAL DU TOURISME SUD A.S.B.L**  
LUXEMBOURG  
+352 27 54 5991  
www.redrock.lu

**VAL DE FENSCH TOURISME**  
2 rue de l'hôtel de Ville  
F-57700 HAYANGE - FRANCE  
+33 (0)3 82 86 65 30  
www.valdefensch-tourisme.com

The list of sites presented in this document is not exhaustive. Get in touch with local experts for more information!

## OUR NATURE

### THE CUSSIGNÈRE SWAMP

This is an over 25 hectares swamp on the French-Belgian border with an astonishing fauna and flora: harriers, wheatears, snipes, and a magnificent hedge composed of plum trees, aspen, willows, hazelnuts, etc.



### LE JARDIN DES TRACES

Set up on an industrial wasteland, the garden is intended to preserve industrial memory. A place to relax and stroll among a plethora of flowers, sculptures and jets of water jets.



### NATURE RESERVE ELLERGRONN

The nature reserve is part of a European network that aims to protect numerous species and their habitats. It is the perfect starting points to discover the surroundings and offers educational walking trails through protected areas.



Also...

### SOUTH OF LUXEMBOURG

- RedRock Mountain Bike Trails
- Nature reserves : «Brucherbiérg - Lalléngérbérg» «Prénzébérg - giele Botter»

15  
16  
17

### PAYS HAUT VAL D'ALZETTE

Discover local heritage along 99 km of hiking trails with wonderful viewpoints between woods and valleys.

### PAYS DE LONGWY

- Thematic tour : «Les Minières à Saint-Pancré»

20

### VAL DE FENSCH

- Hiking trails and cyclotourism
- Calcareous grassland in Ranguevaux and Algrange-Nilvange

18  
19

## OUR HISTORICAL HERITAGE

### MEROVINGIAN NECROPOLIS

The merovingian necropolis is one of the most important archaeological sites to visit in the Grand Est Region, thanks to more than 200 tombs, funerary artefacts, a Latin cross, a votive well and a Gallo-Roman temple.



### VAUBAN FORTIFIED CITY

The fortified city of Longwy is one of Vauban's masterpieces and perfectly expresses his conception of the ideal city. The local Tourist Office invites you to discover the treasures and curiosities of this UNESCO-inscribed site.



### MORLANGE CHAPEL

As a rare witness of Romanesque art in the Lorraine region, the chapel is a haven of peace, standing discreetly hidden from view at the foot of the Justemont hills.



### HISTORIC CENTRE OF AUDUN

A guided tour of the city's historic heart will bring you back to the origins of the city, from ancient times to the middle ages and, eventually, the industrial era in the eldest iron mine in France!



### ROMANESQUE CHURCH

The Romanesque church was built between the 11th and 12th centuries on the Mont-Saint-Martin. The hill overlooks a vast valley with views to France, Luxembourg and Belgium



### ARCHITECTURAL WALK

At the end of the 19th century, Esch-sur-Alzette turned from a rural into an industrial town. The flourishing craft industry and the booming industry compete: art deco, neo-gothic and post-modernist architecture shape the city.



## WITH THE SUPPORTS OF



## OUR MEMORY

### NATIONAL RESISTANCE MUSEUM

The Second World War left its mark on Luxembourg in the same way as on its neighbours. Women and men stood up against Nazi barbarism, fighting and exercising resistance, sometimes passive, sometimes active. The museum traces the country's history from 1940 to 1945, from Nazi oppression to its liberation.



### THE FORT OF FERMONT

Visit a large and authentic artillery fortification of the Maginot Line and discover battle blocks and armaments.



### THE CRYPT IN THIL

The Thil concentration camp housed deportees who worked on the construction of V1 missiles in the mine of the "Syndicat de Tiercelet". You can visit the Crypt, which houses the crematory oven, and walk on the Memory Trail. It is the only concentration camp with a crematorium left on the French not annexed territory.



### GAWRA FRESCOES

Wall paintings occupy a special place in the Fensch Valley. The artist Greg Gawra depicts industrial and rural memory. In Algrange, we can see a 150 m fresco depicting the work of miners.



## OUT OF THE ORDINARY

### LUXEMBOURG SCIENCE CENTER

Have fun while discovering scientific and technological phenomena while having fun: chemistry, biology, astronomy, robotics, combustion engines, acoustics and mathematics.



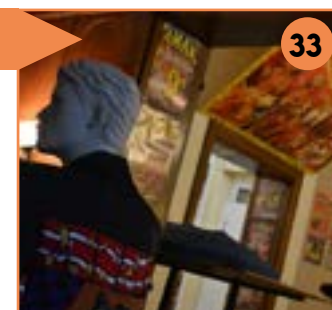
### IRONING MUSEUM

The Longwy Ironing Museum houses the world's largest collection of more than 5,500 items and shows the history of ironing from the 15th century until today.



### CIRCUS MUSEUM

Located in the former factory manager's residence of the Knutange Metallurgical Society, the museum presents the history and life of circus.



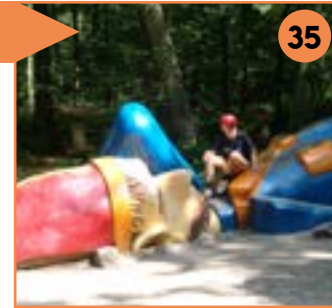
### ESCHER BAMHAISER

Perched up high in the treetops, our "ESCHER BAMHAISER" guesthouses are nestled in the heart of the animal park «Escher Déierepark».



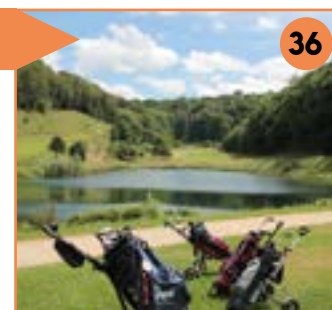
### PARC MERVEILLEUX

The fairytale park is conceived to have fun, go for an adventure, tickle your imagination, discover and learn: a fairytale forest, giant figures to climb on...



### INTERNATIONAL GOLF

At the crossroads of the Three Border Region (Belgium, Luxembourg, France), golfer will be seduced by the pure air at the golf. The club house, bar, restaurant and shop are open seven days a week.



The European Grouping of Territorial Cooperation (EGTC) Alzette Belval is a French-Luxembourgish structure. As part of its missions, it has joined forces with the tourist offices of the South Luxembourg Region, the Pays de Longwy and the Val de Fensch with the aim of promoting and highlighting cross-border heritage.

Crédits photos : Pulsa Pictures, ORT Sud / Raoul Gilibert productions photographiques / photo OTPL DimDom / Service communication CAVF / Val de Fensch Tourisme / «Tous les soleils» Claude Levêque

# KEY

## AT THE HEART OF INDUSTRIAL CULTURE

### 1 MUSEUM OF ENAMELS AND EARTHENWARE

Rue de la manutention - F-54400 Longwy  
www.museedesemaux.wordpress.com

### 2 MINETT PARK FOND-DE-GRAS

L-4576 Differdange  
www.minettpark.lu

### 3 STAINED GLASS WINDOWS BY MAJORELLE

Maison de la Formation - F-54810 Longlaville  
www.longwy-tourisme.com

### 4 THE DE WENDEL HERITAGE

F-57700 Hayange  
www.valdefensch-tourisme.com

### 5 NATIONAL MINING MUSEUM

rue de la Bruyère - L-3714 Rumelange  
www.mnm.lu

### 6 THE COCKERILL MINE

Centre d'Accueil Ellergronn - Rue Jean-Pierre Bausch;  
L-4114 Esch-sur-Alzette www.minetttour.lu

### 7 THE HUSSIGNY MINE

Carreau de la mine - F-54590 Hussigny Godbrange  
www.mine-hussigny.fr

### 8 IRON MINE IN NEUFCHÉF

Rue du musée - F-57700 Neufchef  
www.musee-minesdefer-lorraine.com

### 9 IRON MINE IN AUMETZ

5 rue St Léger de Montbrillais - F-57710 Aumetz  
www.musee-minesdefer-lorraine.com

### 10 BELVAL BLAST FURNACES

Avenue du Rock'n'Roll - L- 4361 Esch sur Alzette  
www.fonds-belval.lu

### 11 BLAST FURNACE U4

1 rue du Jardin des Traces F-57270 Uckange  
www.hf-u4.com

## OUR NATURE

### 12 THE CUSSIGNÈRE SWAMP

France  
www.longwy-tourisme.com

### 13 LE JARDIN DES TRACES

1 rue du Jardin des Traces  
www.jardindestrac.es.fr

### 14 NATURE RESERVE ELLERGRONN

Rue Jean-Pierre Bausch - L-4114 Esch-sur-Alzette  
Tel.: +352 26 54 42 1

### 15 REDROCK MOUNTAIN BIKE TRAILS

Luxembourg  
www.redrock.lu

### 16 «BRUCHERBERG - LALLÉNGERBERG»

Luxembourg  
www.redrock.lu

### 17 «PRÉNZEBERG - GIELE BOTTER»

Luxembourg  
www.redrock.lu

### 18 CHALK GRASSLAND

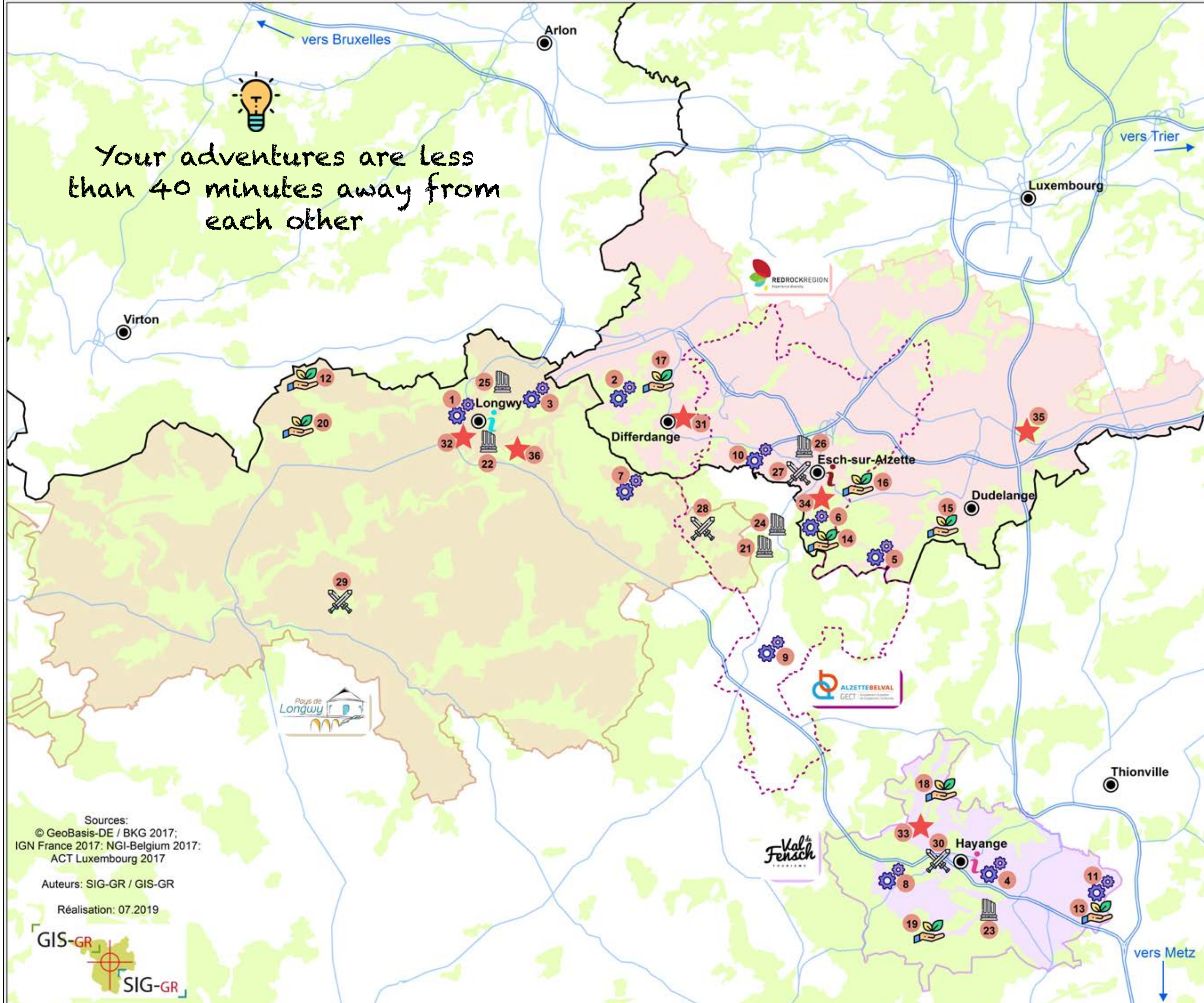
2 rue du witten - F-57440 Algrange  
www.valdefensch-tourisme.com

### 19 CHALK GRASSLAND

Zone de loisirs du Fond Berger - F-57700 Ranguevaux  
www.valdefensch-tourisme.com

### 20 THE MINES OF SAINT PANCRÉ

Your adventures are less than 40 minutes away from each other



Sources:  
© GeoBasis-DE / BKG 2017;  
IGN France 2017; NGI-Belgium 2017;  
ACT Luxembourg 2017

Auteurs: SIG-GR / GIS-GR

Réalisation: 07.2019



## OUR HISTORICAL HERITAGE

### 21 MEROVINGIAN NECROPOLIS

rue Rancy - F-57390 Audun-le-Tiche  
www.sahla.fr

### 22 VAUBAN FORTIFIED CITY

F-54400 Longwy  
www.longwy-tourisme.com

### 23 MORLANGE CHAPEL

121 rue St Roch F-57290 Fameck  
www.valdefensch-tourisme.com

### 24 HISTORIC CENTRE OF AUDUN

F-57390 Audun-le-Tiche  
www.ccpvhva.com

### 25 ROMANESQUE CHURCH

1 Cité du Prieuré - F-54350 Mont-Saint-Martin  
eglise-msm.e-monsite.com

### 26 ARCHITECTURAL WALK

L-4002 Esch-sur-Alzette  
www.esch.lu

## OUR MEMORY

### 27 NATIONAL RESISTANCE MUSEUM

Place de la Résistance - L-4041 Esch-sur-Alzette  
www.musee-resistance.lu

### 28 THE CRYPT IN THIL

Rue des déportés - F-54880 Thil  
www.longwy-tourisme.com

### 29 THE FORT OF FERMONT

F-54620 Beuveille  
www.fort-de-fermont.fr

### 30 GAWRA FRESCOES

Val de Fensch - France  
www.valdefensch-tourisme.com

## OUT OF THE ORDINARY

### 31 LUXEMBOURG SCIENCE CENTER

50, rue Emile Mark - L-4620 Differdange  
www.science-center.lu

### 32 IRON MUSEUM

Rue de la Manutention - F-54400 Longwy  
www.longwy-tourisme.com

### 33 CIRCUS MUSEUM

12 rue Joffre - F-57240 Nilvange  
www.valdefensch-tourisme.com

### 34 ESCHER BAMHAISER GUESTHOUSES

64, Gaalgebiert - L-4142 Esch-sur-Alzette  
www.bamhaiser.esch.lu

### 35 FAIRYTALE PARK «PARC MERVEILLEUX»

Route de Mondorf - L-3260 Bettembourg  
www.parc-merveilleux.lu

### 36 INTERNATIONAL GOLF

Rue de la Croix Chaudron - F-54400 Longwy  
www.golfongwy.fr

**CITY TOURIST OFFICE**  
Place de l'Hôtel de Ville  
L-4138 Esch-sur-Alzette  
+352 54 16 37  
www.esch.lu  
f VilleEsch

**OFFICE DE TOURISME DU PAYS DE LONGWY**  
Place Darche - Puits du siège  
F-54400 LONGWY - FRANCE  
+33 (0)3 82 24 94 54  
www.longwy-tourisme.com  
f longwy.tourisme

**VAL DE FENSCH TOURISME**  
2 rue de l'hôtel de Ville  
F-57700 HAYANGE - FRANCE  
+33 (0)3 82 86 65 30  
www.valdefensch-tourisme.com  
f otvaldefensch  
ValdeFensch