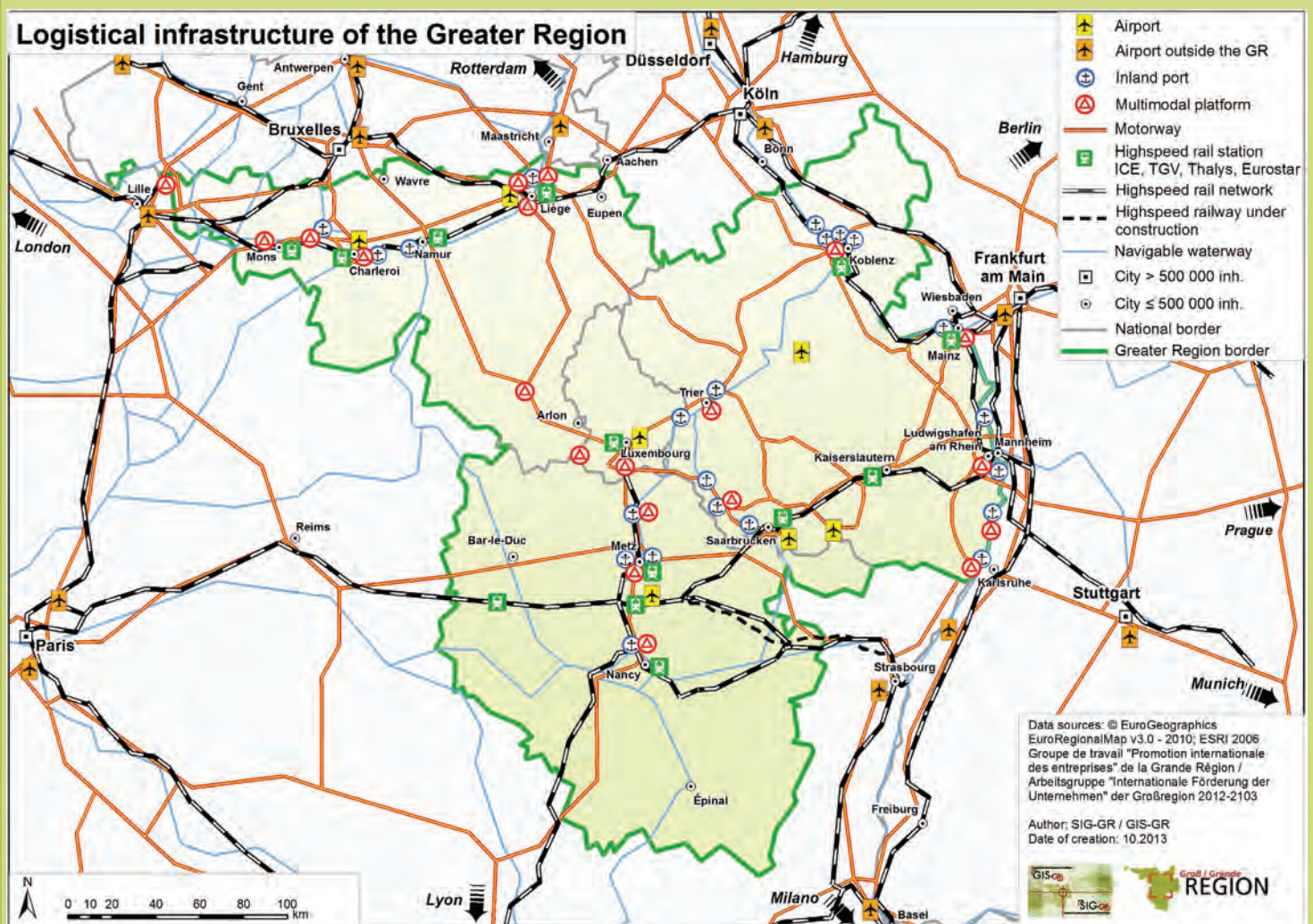


INVEST IN THE HEART OF EUROPE



We have Europe in our hearts

SETTLE YOUR BUSINESS IN A STRATEGIC LOCATION



- ❑ 8 international airports flew more than 11 million passengers and 11 million tons of freight in 2012
- ❑ At the heart of the largest network of waterways in Europe
60 million tons of freight are handled each year in the 20 main GR ports
- ❑ High speed trains already bring GR passengers to Paris and Frankfurt in less than two hours
- ❑ The European high-speed rail freight network will soon link London to Paris, Amsterdam and Frankfurt - www.eurocarex.com
- ❑ Transport, warehousing, distribution and logistics services with high added value
- ❑ Over 15 multimodal platforms spread over the Greater Region

AN OPEN ECONOMY

- ❑ 65,400 km² and 11.35 million inhabitants
- ❑ GDP : 321 billion €
- ❑ 130 bi.€ exported and a largely positive trade balance
- ❑ National languages: French, German, Luxembourgish and English largely spoken
- ❑ €500 billion worth of foreign direct investment and about 6500 jobs created

10 GOOD REASONS TO INVEST IN THE GREATER REGION

IN THE HEART OF EUROPE

With Luxembourg at its centre and Brussels and Strasbourg at its doorstep, the Greater Region offers a unique access to the seats of main European and International Institutions.

EXPLORE THE EUROPEAN MARKET ON A SMALL SCALE

Its 11.35 million multilingual and multicultural population makes the Greater Region an ideal test market for Europe's 500 million consumers market.

SETTLE YOUR BUSINESS IN A STRATEGIC LOCATION

50% of the European Union's GDP can be serviced in a radius of 350 km and in less than a day thanks to its dense road-, rail-, and waterway- network.

JOIN A STRONG LOGISTICS NETWORK

Over 15 multimodal logistics platforms including a wide range of transport, warehouse, distribution and logistics services connect the region's dense transport network.

PROFIT FROM SYNERGIES OF OUR COMPANIES

Traditional firms such as SME's and accordingly the Hidden Champions are the backbone of the Greater Region's economy. Together with world-renowned and globally active large companies they all form a diversified economic structure.

MANUFACTURE IN A REGION WITH A HIGH PRODUCTIVITY

The Greater Region offers a strong industrial know-how, high-tech infrastructures and a motivated, technically skilled workforce.

INNOVATE TOGETHER WITH THE GREATER REGION

Universities, research centres, Science parks, clusters and competitiveness centres work closely together with public support to achieve highly innovative and competitive business performances.

RELY ON A SOPHISTICATED FINANCE AND BANKING EXPERTISE

The Greater Region offers competitive financial services and supports your investment projects with complete systems of financial incentives.

FIND GLOBAL SOLUTIONS TO SET UP YOUR BUSINESS

From the advice on business location, custom-made support, recruitment and training, ... to the turnkey property.

ENJOY THE HIGH QUALITY OF LIFE

Discover a variety of cultures and traditions recognised as Unesco World Heritage and leisure in a region offering a wide range of rural and cosmopolitan pleasures.

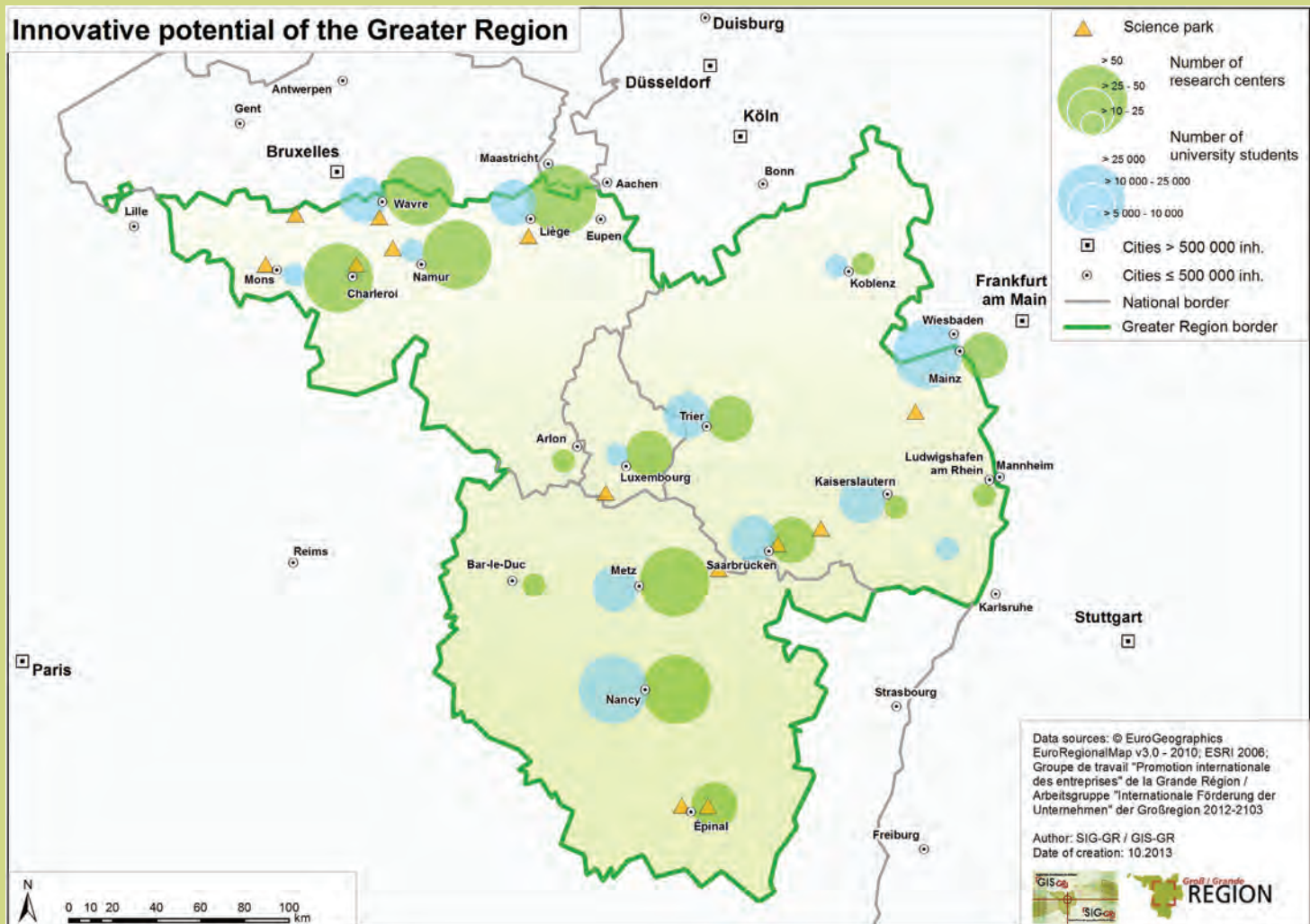
EXPERIENCE THE SPIRIT OF EUROPE



Pascal BODEZ – Région Lorraine
Centre Pompidou Metz
Metz Métropole

THE GREATER REGION

THE PLACE TO BE FOR INNOVATION



- ❑ 13 universities with some 330.000 students
www.uni-gr.eu
- ❑ More than 600 research centres and science parks serving innovation
- ❑ Five Regions at the forefront of progress with networks and competitiveness centres in technology sectors - main clusters and competitiveness poles :
 - Agro-industry
 - Life sciences, bio- and health technologies
 - Mechanical and automotive engineering, new materials
 - Aeronautics and space
 - ICT
 - Environment and sustainable technologies





CONTACT US

Wallonia Export and Investment Agency

Phone : +32 81 33 28 50

welcome@investinwallonia.be

www.investinwallonia.be

Agency for Economic Mobilization Regional Council of Lorraine

Phone : +33 3 87 54 32 24

anne.fritsch-renard@lorraine.eu

www.lorraine.eu

GWSAAR

Saarland Economic Promotion Corporation

Phone : +49 681 9965 400

info@invest-in-saarland.com

www.invest-in-saarland.com

Luxembourg for Business

Phone: +352 24 78 41 16

gr@luxembourgforbusiness.lu

www.luxembourgforbusiness.lu

Investment and Economic Development Bank of Rhineland-Palatinate

Phone : +49 6131 6172-1117

isb-marketing@isb.rlp.de

www.isb.rlp.de



Wallonia.be

EXPORT
INVESTMENT



La Région

Lorraine



ISB

Investment and Economic
Development Bank of
Rhineland-Pfalz