

# Smart Integration Project in Lower Silesia and Saxony

Berlin 21.06.2018



## Cross-border spatial development projects at the Institute for Territorial Development

- **Projects completed**

- Common Future Vision for the German-Polish Interaction Area

- **Ongoing and future projects**

- Smart Integration
- Revival

- **Cross-border continuous cooperation**

- European Grouping of Territorial Cooperation - EGTC Novum Polish-Czech Republik
- Lower Silesia – Saxony Work Group
- Spatial Development Committee of the German-Polish Governmental Commission for Regional and Cross-Border Cooperation

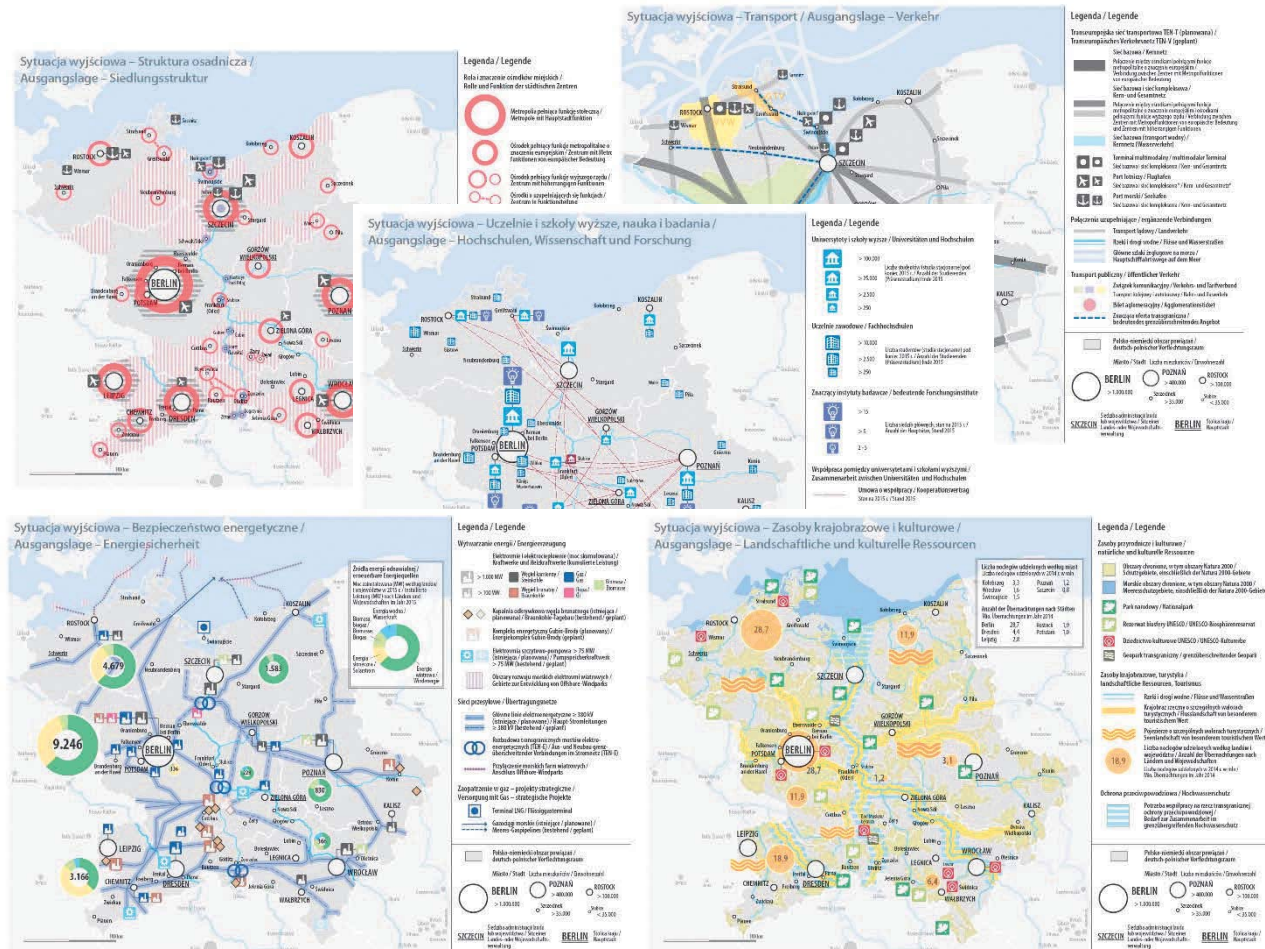
# Common Future Vision for the German-Polish Interaction Area, Horizon 2030

- 2014-2016
- Spatial Development Committee of the German-Polish Governmental Commission for Regional and Cross-Border Cooperation
- 4 federal states: Mecklemburg-Verpommen, Brandenburg, Berlin and Saxony,
- 4 voivodeships: Lower Silesia, Lubuskie, Zachodniopomorskie i Wielkopolskie
- <https://www.kooperation-ohne-grenzen.de/de/zukunftskonzept/>



# Common Future Vision for the German-Polish Interaction Area, Horizon 2030 – thematic areas

- I. Taking advantage of polycentric settlement patterns
- II. Improving transport links
- III. Investing in people
- IV. Promoting sustainable growth
- V. Providing the setting for a high quality of life



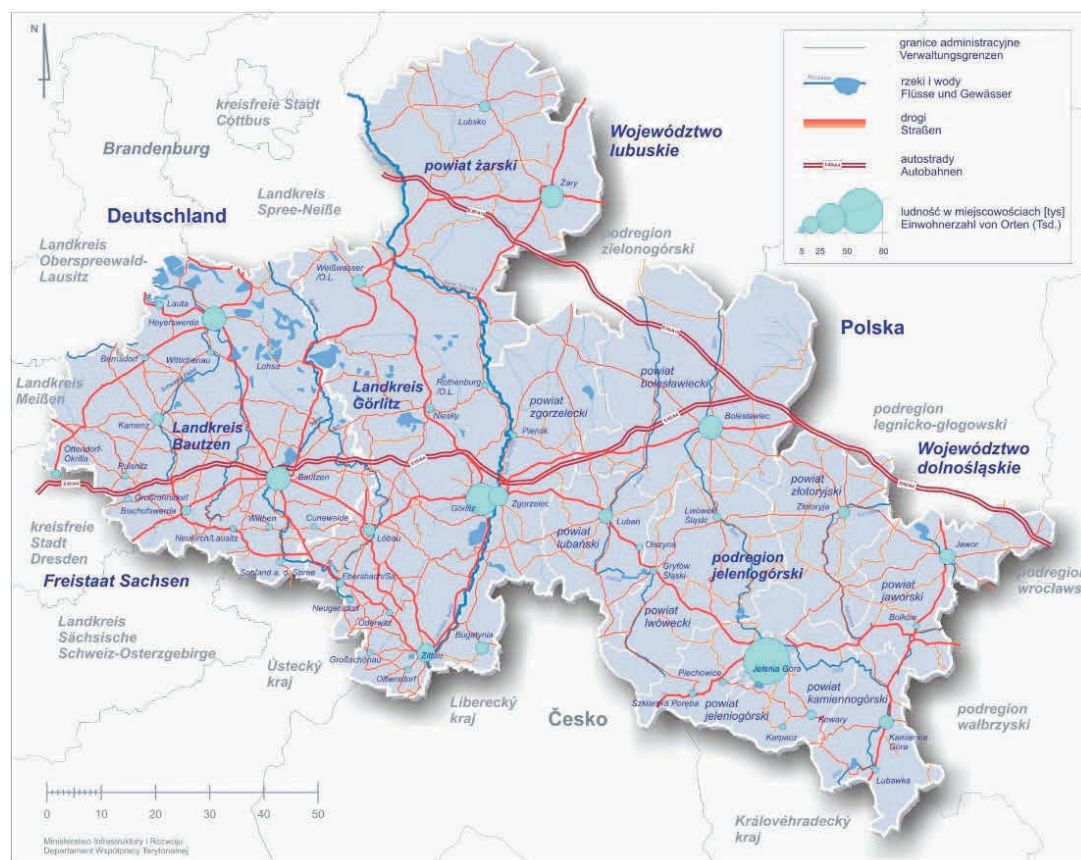
# REVIVAL! – Cultural and natural heritage for revitalization and enhancing quality of life in historic cities in Saxony and Poland

- 2018-2020
- INTERREG Poland-Saxony 2014-2020, priority axis: Common Natural and Cultural Heritage,
- Lead Partner: Leibniz Institute for Ecological Spatial Development, Dresden
- Project Partners:
  - International Institute Zittau (IHI Zittau)/The Technische Universität Dresden (TU Dresden),
  - The Interdisciplinary Centre for Ecological and Revitalizing Urban Transformation (IZS) in Görlitz.
  - Lower Silesia Voivodeship – The Institut for Territorial Development in Wrocław
  - 6 towns in Poland and 4 towns in Saxony



## Smart Integration

- 01.02.2017 – 31.01.2020
- INTERREG Poland-Saxony 2014-2020
- Lead Partner: Saxon State Ministry of the Interior
- Partner: Lower Silesia Voivodeship, Marshal Office and Institute for Territorial Development
- Territory: support area of Interreg Program
- <http://www.landesentwicklung.sachsen.de/29534.htm>



## Goals of Smart Integration Project

- The main goal of project:
  - strengthening and intensifying administrative cooperation in the field of spatial and regional development in the Lower Silesia-Saxon border area (support area), in particular with regard to combating negative demographic changes.
- The detailed goals:
  - development of assumptions and strategic solutions and identification of potentials in the area of joint cross-border spatial and regional development in the area of support,
  - joint development and implementation of actions leading to minimizing the effects of demographic changes among the population of the Lower Silesia and Saxony,
  - supporting the regional identity development of the Saxon-Lower Silesian borderland.

## Results of the Smart Integration Project

- increasing cross-border potential by developing common documents, exchanging experience and information,
- increase in the cross-border competence of experts responsible for spatial and regional development,
- strengthening joint and consistent spatial development in the area of support,
- improving cooperation in the field of demography in the area of support,
- improving the perception of the support area as an attractive place to live and invest.



# Smart Integration

- Social-economic analysis

Three thematic areas:

Demographic and social challenges

Economic challenges

Spatial challenges

# Smart Integration

- Saxon-Lower Silesian spatial study

## Five thematic areas

Settlement structure and main centres

Communication and transport

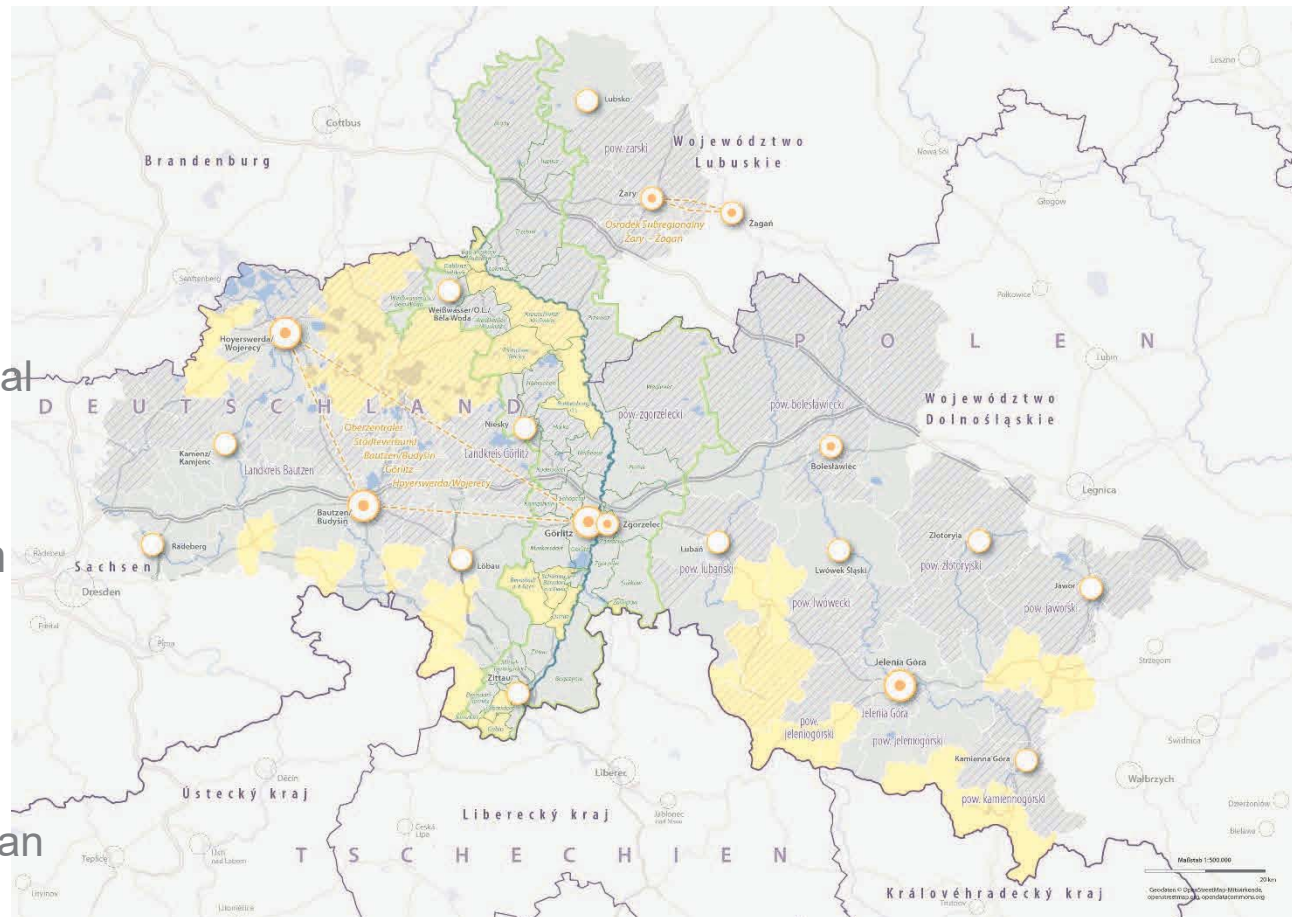
Sustainable growth

Turistic, natural and cultural resources

Cooperation of public administration

## Main problems

- Social-economic analysis:
  - incomparable data,
  - no data,
  - incomparable territorial units.
  
- Saxon-Lower Silesian spatial study:
  - incomparable spatial plans and other documents,
  - new context, other than national.



Thank you for your attention!

Agnieszka Wałęga  
[agnieszka.walega@irt.wroc.pl](mailto:agnieszka.walega@irt.wroc.pl)

Berlin 21.06.2018

